



AC Linear Motor Servo Driver

* cpc reserves the right to revise any information(technical details) any time without notice, for printing mistakes or any other incidental mistakes. We take no responsibility.

cpc CHIEFTEK PRECISION Co., LTD.

HEADQUARTERS
CHIEFTEK PRECISION Co., LTD.
No.3, Daili 1st Rd., Sinshih Township,
Tainan Science Park, 741-45 Tainan, R.O.C
TEL:+886-6-505 5858 Http://www.chieftek.com
E-mail:service@mail.chieftek.com

CHIEFTEK PRECISION USA
4881 Murietta Street,
Chino, CA. 91710
Tel: +1-909-628-9300
Fax: +1-909-628-7171

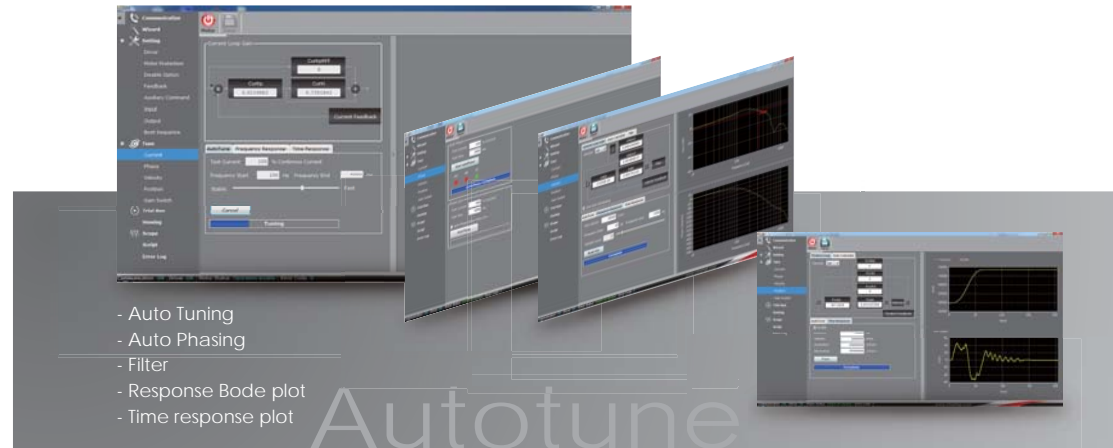
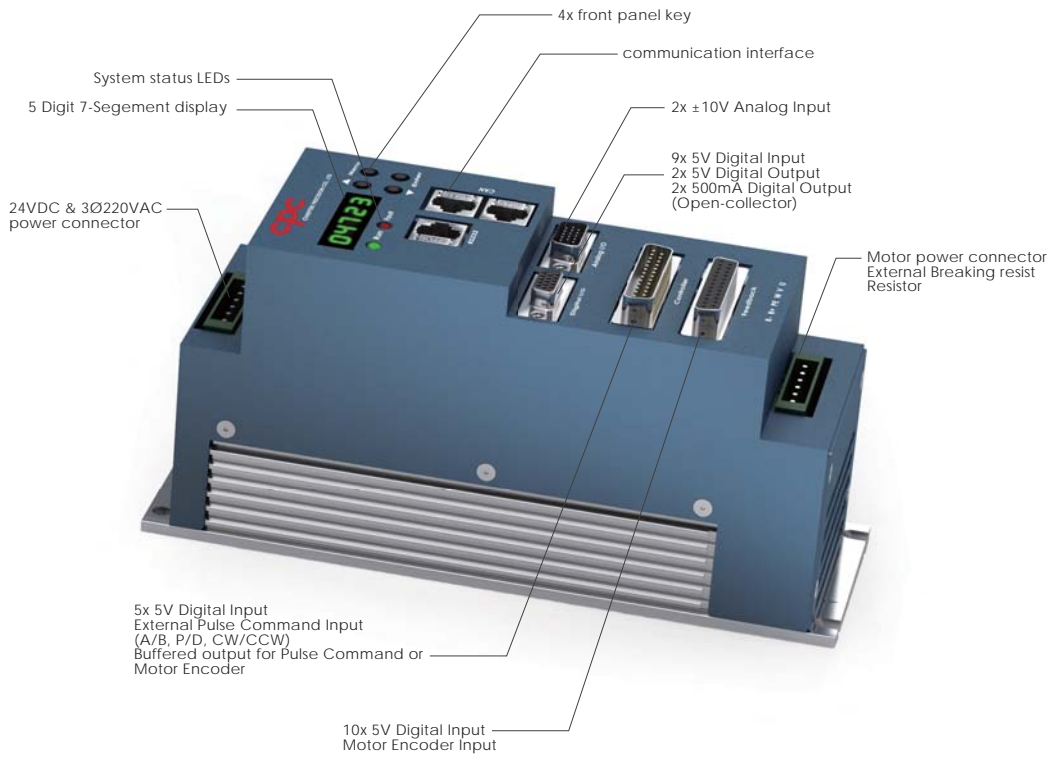
cpc Europa GmbH
Industriepark 314,
D-78244 Gollmadingen, Germany
TEL:+49-7731-59130-38
FAX:+49-7731-59130-28

CHIEFTEK MACHINERY KUNSHAN Co., LTD.
No.1188, Hongqiao Rd, Kunshan,
Jiangsu, P.R. China
TEL:+86-512-5525 2831
FAX:+86-512-5525 2851



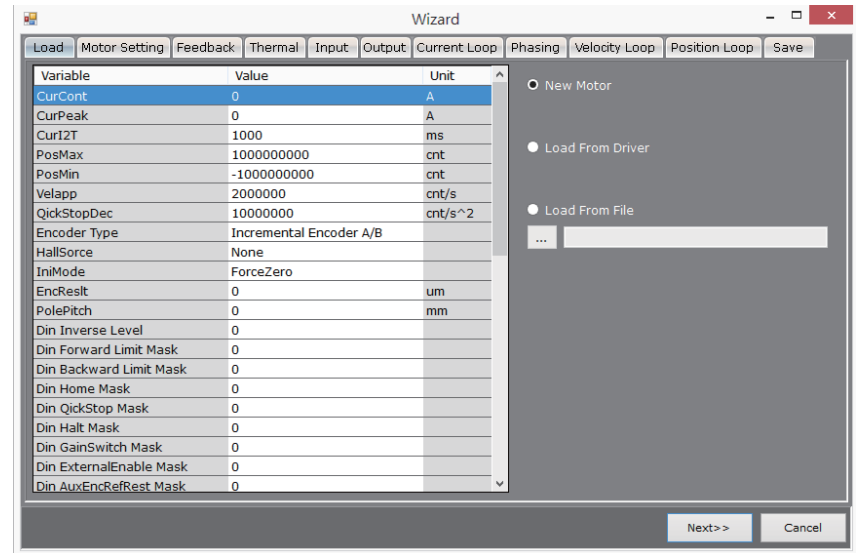
Product Overview

- Auto Phasing
- Auto Tuning
- Auto Gain Switch
- Current Filter
- Oscilloscope
- S-curve Profile
- Anti-Cogging
- Scripting

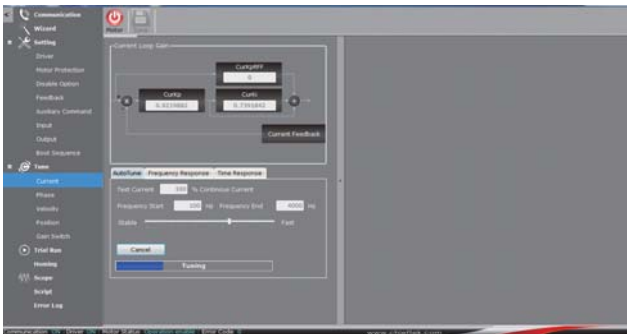


- Auto Tuning
- Auto Phasing
- Filter
- Response Bode plot
- Time response plot

Wizard Step by step setup interface

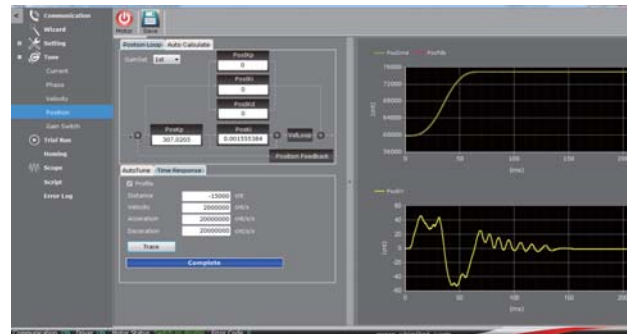


Auto tune



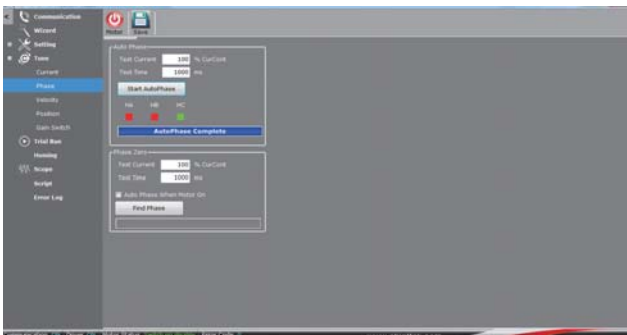
- Auto tuning
- Visible control loop
- User-friendly interface
- Highly efficient tuning algorithm
- Short tuning time
- Can tune for stable or fast system response

Auto tune(position)



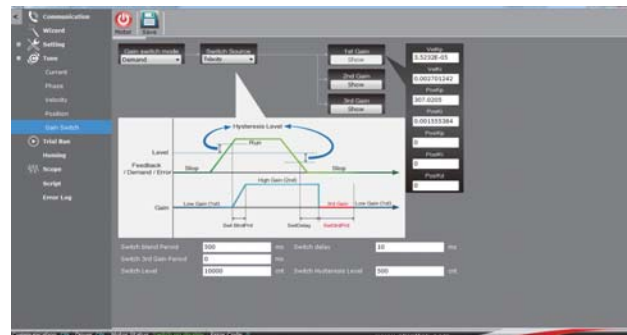
- Fast control loop up to 5k Hz
- Can test 3 groups of gain set
- Feedforward signal path
- Easy to fine tune
- Input response with profile position

Auto phasing



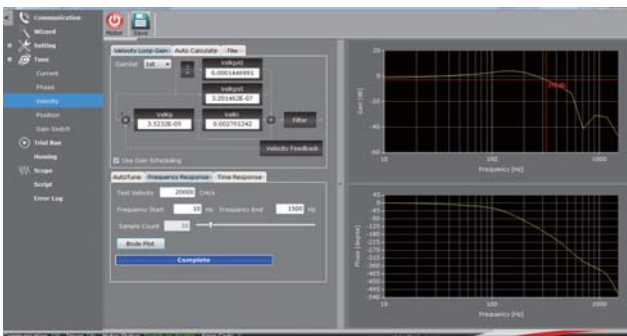
- Auto phasing
- Hall sensor or forcecommutation
- Step by step phasing progress prompt

Gain switch



- 3 groups of position and velocity gains can be switched
- Gain-switch rule: Demand, Feedback, Error, Target, and Digital Input
- Easy to fine tune for different application

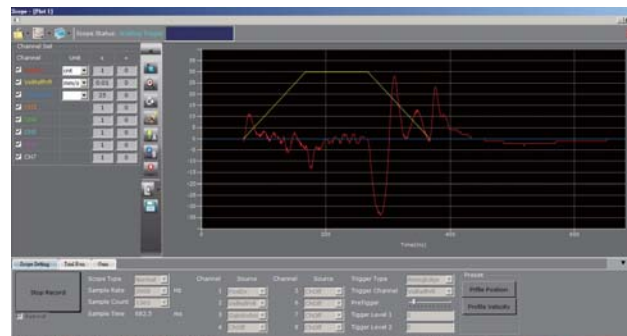
Auto tune(velocity)



- Fast control loop up to 10k Hz
- Can test 3 groups of gain set
- Easy to fine tune
- Feedforward signal path
- Response Bode plot
- Automatic label bandwidth
- Input response test with step/sine/triangle
- 3 filters on force output

Gain switch Test

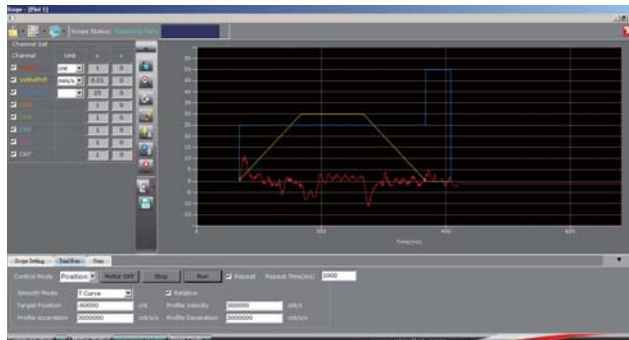
- Distance:0.6m
- Velocity:3m/s
- Acceleration:3g
- Deceleration:3g



- Performance without Gain-switch
- Yellow: velocity profile
- Red: Position Error [+/- 35 count]

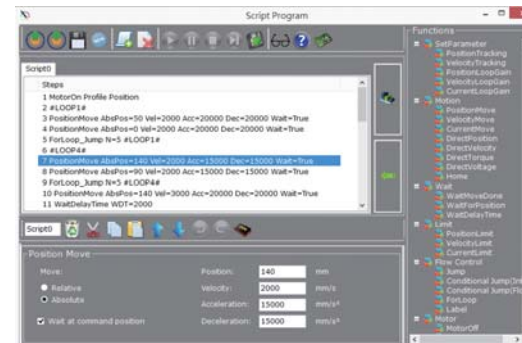
Gain switch Test

- Distance:0.6m
- Velocity:3m/s
- Acceleration:3g
- Deceleration:3g



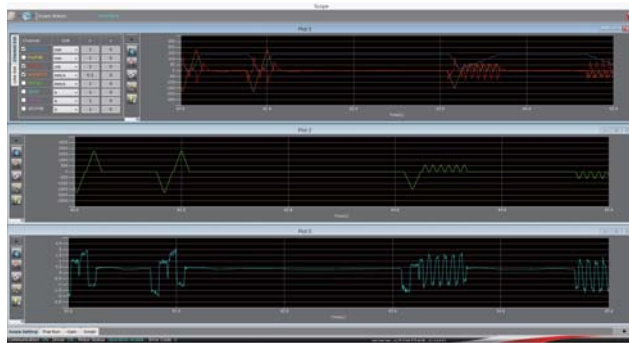
Performance with Gain-switch
 Yellow: velocity profile
 Red: Position Error [+ - 11 count]

Scripting



Script could program motor motion with user-friendly interface.

Scope



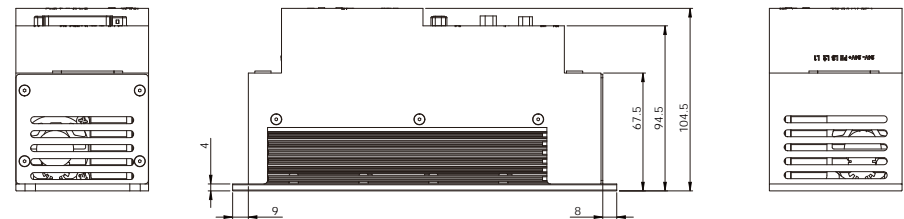
- Scope provides a real time monitor of driver information.
 - User could inspect motion detail without an oscilloscope.

Homing



- Setup interface provides 35 kinds of homing methods.
 - Also, the vivid animations explain how a homing method is performed.

Dimension



Specification

Operating voltage	AC110 V-220 V	
Maximum peak power	3 kW	
Maximum peak current	16 A	
Maximum continuous current	8 A	
Communication	RS232, CAN	
Size	201 mm*76.5 mm*108 mm	
Motor type	Linear Servo Motor, Rotary Servo Motor	
Encoder feedback	A/B incremental	
Auxiliary command	Position Current/Velocity command	A/B Incremental, P&D pulse, Analog input Analog input
AutoTune	Phase, Current Loop, Velocity Loop, Position Loop, Filter, Gain Scheduling	
Find phase	Hall Sensor, Force Commutation	
Control panel	Display Input	5 Digit 7 Segment display 4 Keys
Protection	Over Voltage, Over Current, Temperature, Motor Stuck, Software position limit, etc.	

